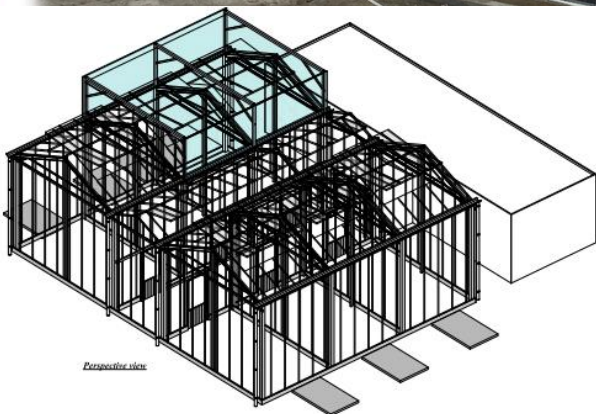


RESEARCH GREENHOUSE

DHAKA BANGLADESH



CMF GROUP

REFERENCE

CUSTOMER'S INFORMATION

- Bangladesh Jute Research Institute (BJRI) is aiming to develop new varieties of jute.
- In Bangladesh jute growth lasts only 4 months per year.
- The goal of this greenhouse is to test, in optimal conditions, the new varieties of jute all year long.



KEY FIGURES

- 200 sqm area
- Achieved in 2016
- 6 cells, 1 circulation corridor and 1 technical area

TECHNICAL FOCUS

- Glazed research greenhouse
- Protection against insects (insect nets)
- Interior and exterior thermal/shading screens
- Black room
- Heating, air-conditioning, humidification and deshumidification, drip irrigation
- Photosynthetic lighting system with high illumination level
- Supervision by a climate control computer

CMF GROUP FOCUS

- As a research greenhouse specialist, the CMF group has designed, studied and manufactured the whole project with researchers
- Our technicians have supervised assembly works, carried out by teams of Bangladeshi workers.

Any reproduction even partial is strictly prohibited without prior authorization